



THE ACHILL

3 Bedroom Semi-Detached
116 sqm / 1250 sqft



**ARD
GRIFFIN**
BY CLANCY HOMES



THE ACHILL

The Achill is a beautifully created three-bedroom semi-detached home, offering 116 sqm of thoughtfully designed living space. Blending clean modern lines with timeless architectural touches, this property is ideal for those seeking comfort, style, and long-lasting quality. With a focus on spacious interiors, natural light, and energy-efficient living, this home is perfectly suited for modern family life in a setting that balances elegance with practicality

ARD GRIFFIN, BY CLANCY HOMES

Clancy Homes are pleased to present you with your Ard Griffin Home. Designed to endure and enhance your quality of life at Water Rock, Midleton, Co Cork, Ard Griffin has every amenity within striking distance as well as ease of access to major road, rail and bus networks. Ard Griffin homes exemplify Clancy Homes attention to detail, providing quality homes with considered layouts and high level finishes.

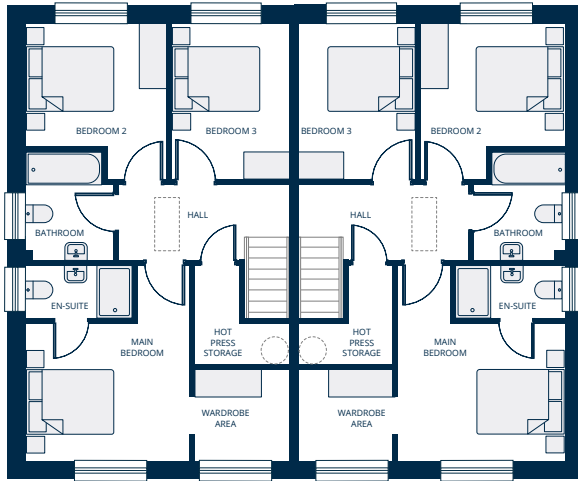


THE ACHILL

3 Bedroom Semi-Detached
116 sqm / 1250 sqft

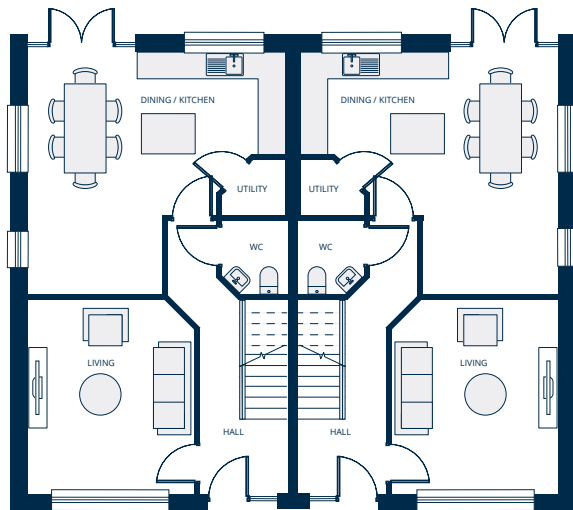


**ARD
GRIFFIN**
BY CLANCY HOMES



FIRST FLOOR

Room	Metric (m)	Imperial (ft)
Main Bedroom	2.8 x 3.5	9' 2" x 11' 6"
En Suite	1.2 x 2.3	3' 11" x 7' 7"
Bed 2	2.7 x 3.1	8' 10" x 10' 2"
Bed 3	3.5 x 2.4	11' 6" x 7' 10"
Bathroom	2.4 x 1.9	7' 10" x 6' 3"
Walk in Wardrobe	1.9 x 2.0	6' 3" x 6' 7"



GROUND FLOOR

Room	Metric (m)	Imperial (ft)
Living Room	4.1 x 3.6	13' 5" x 11' 10"
Kitchen	3.0 x 3.3	9' 10" x 10' 10"
Dining Room	5.4 x 2.9	17' 9" x 9' 6"
WC	1.6 x 1.4	5' 3" x 4' 7"
Utility	1.2 x 1.4	3' 11" x 4' 7"

FLOOR PLANS ARE FOR ILLUSTRATIVE PURPOSES ONLY AND ARE SUBJECT TO CHANGE